


Panasonic Cameras



Everything starts with the Camera.....but...it's only the start



100 feet is the horizontal plane. My shoulders of 2 feet stays constant. So my shoulders fill 1/50th of the horizontal shot.... but my face is 6 inches so it is 1/200th of the horizontal shot

To identify something I have know knowledge of. I want the object to be at least 1/25 of the horizontal plane with Full HD camera.....My face is only 6 inch wide...if you count the red measure arrows it is about 1/25.

2 foot wide

2 foot wide

2 foot wide

2 foot wide

2 foot wide

10 feet is the horizontal plane at this distance. My shoulders of 2 feet wide stays constant. So I fill 1/5th of the horizontal shot (2 ft x 5=10ft) which if I physically measure from wall to wall at the point I am standing is about 10ft..... but notice how fast the horizontal plane distance grows. so by moving only a few feet away from the camera I fill less and less of the horizontal plane

Where you put your cameras is important. Position Cameras so subjects walk towards them. This gives you more pixels on target for identification and general surveillance in the background

Do you need low light camera...camera with IR or Black white camera with added NuOptic IR light



Daytime shoot



NO IR Light just
True black white



IR Light of the
camera on



NuOptic IR light
outside of camera

Do you need Super Dynamic to fight High contrast lighting situations



No Super dynamic

Black Stretch



Super dynamic ON

Super dynamic ON

Do you need a Pan tilt zoom camera for distance...PTZ distance Panasonic SW598/SC588 (90 extra Optical)



WV-SC588 is -25 degrees



WV-Q122



WV-Q122



WV-Q118



approximately 465 ft



Google Map of shot



approximately 640 ft

Panasonic 360 Fisheye and 180 imaging from same model camera

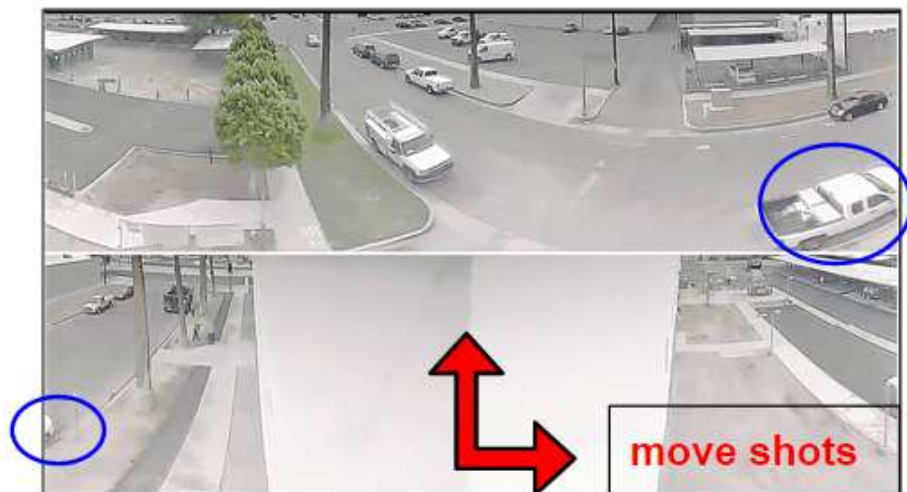
360 round shot



Change image of fisheye into a quad at camera level or
manipulate thru ASM200 software on the fly



blue circle is around the same truck for reference



Double 180 shot



WV-SW458/WV-SF448 and WV-SF438



WV-Q7118



DTWWMTW



PWM484S/PPM484S
PHM484S/PCM484S

Panasonic 180 degree example shots

Open Door Inc www.opendeye.com

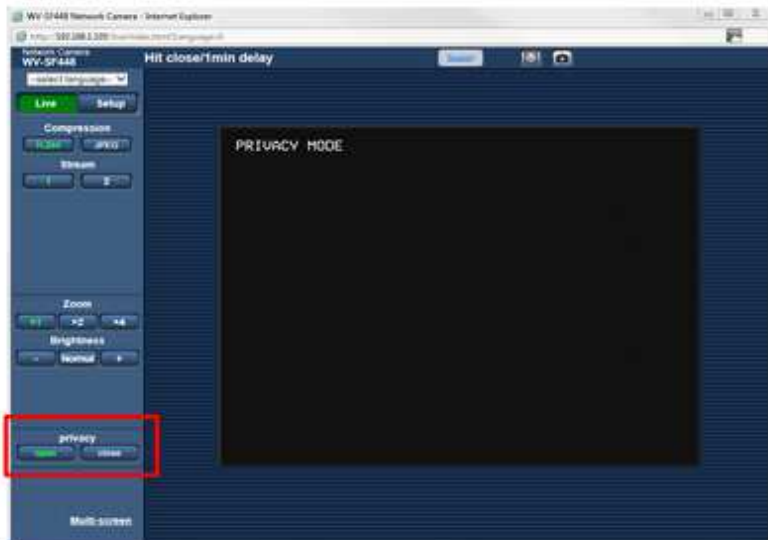


WV-SW458/WV-SF448 and WV-SF438

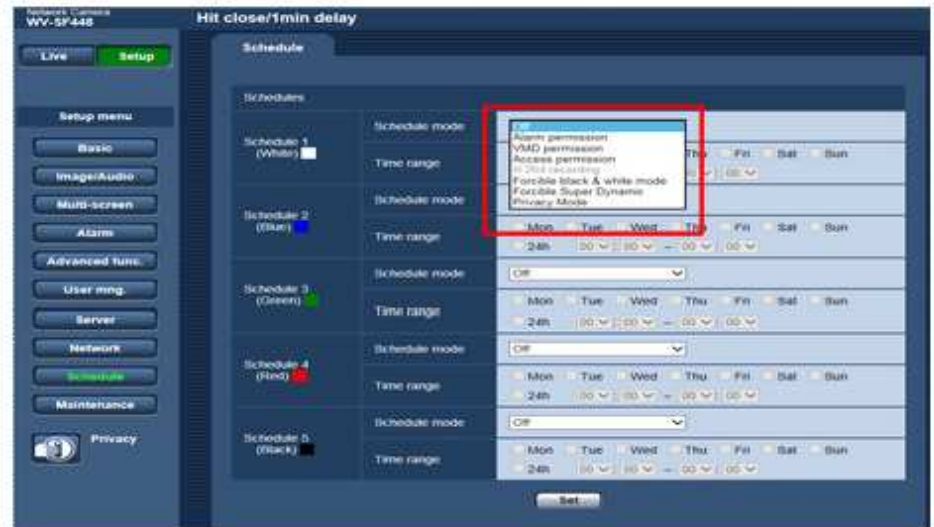
WV-Q7118



Panasonic WV-SF448 360/180 degree privacy mode camera



Activate Camera privacy mode from camera web page



Activate Camera privacy mode on a date and timed schedule from the camera webpage

Activate Camera privacy mode On and Off with CGI commands
http://ip address of camera/cgi-bin/privacy_shutter?mode=on
http://ip address of camera/cgi-bin/privacy_shutter?mode=off



Activate Camera privacy mode On and Off from ASM200 software

Activate Privacy mode from open/close contact into camera

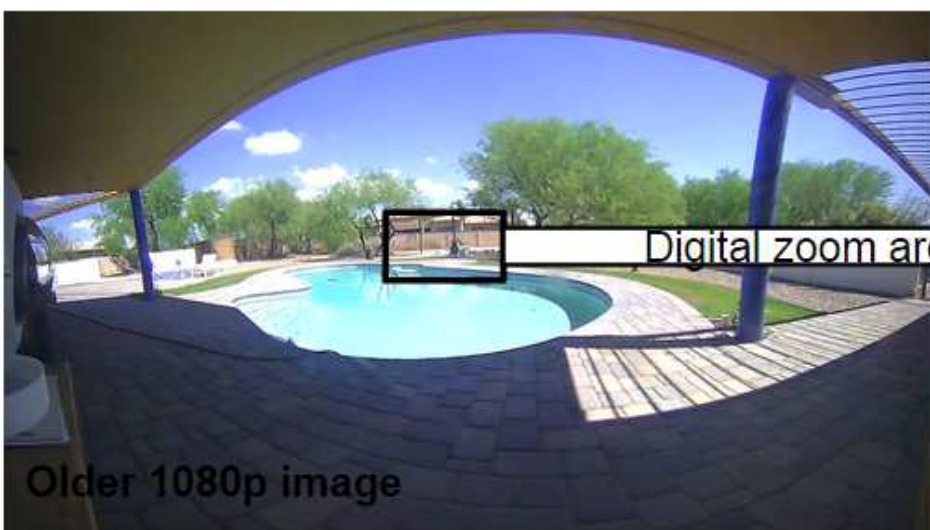




New 4 K WV-SFV481, WV-SFN480 image quality vs
older WV-SW458, WV-SF438



Digital zoom area



Digital zoom area



Should I buy 4K as a 360 camera for coverage or the fixed version and put more on the building?

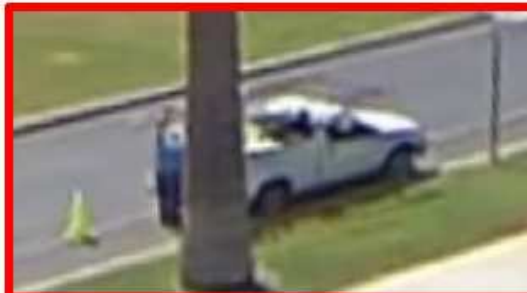
One 360 WV-SFV481 camera records everything



Two SPV781L cameras cover everything but the tennis courts. You would need 3 SPV781L cameras to cover the same ground as one SFV481 Camera



Now we will show digital zooms into the picture. **Red** zooms are from the SFV481 360 4K and **Blue** are from the SPV-781L. Same shot distance and corner mount



ULTRA High Resolution

9M (3k x 3k) provides high resolution on the bottom and at the edges

Height 3.8m
Desk 0.7m

6m

SFV481

SF448

AXIS

HIKvision



15m

SFV481

SF448

AXIS

HIKvision



14m

SFV481

AXIS



SFV481

SF448

AXIS

HIKvision



3.1m



15m

SFV481

SF448

AXIS

HIKvision



23m

SFV481

SF448

AXIS

HIKvision



13m

SFV481

AXIS

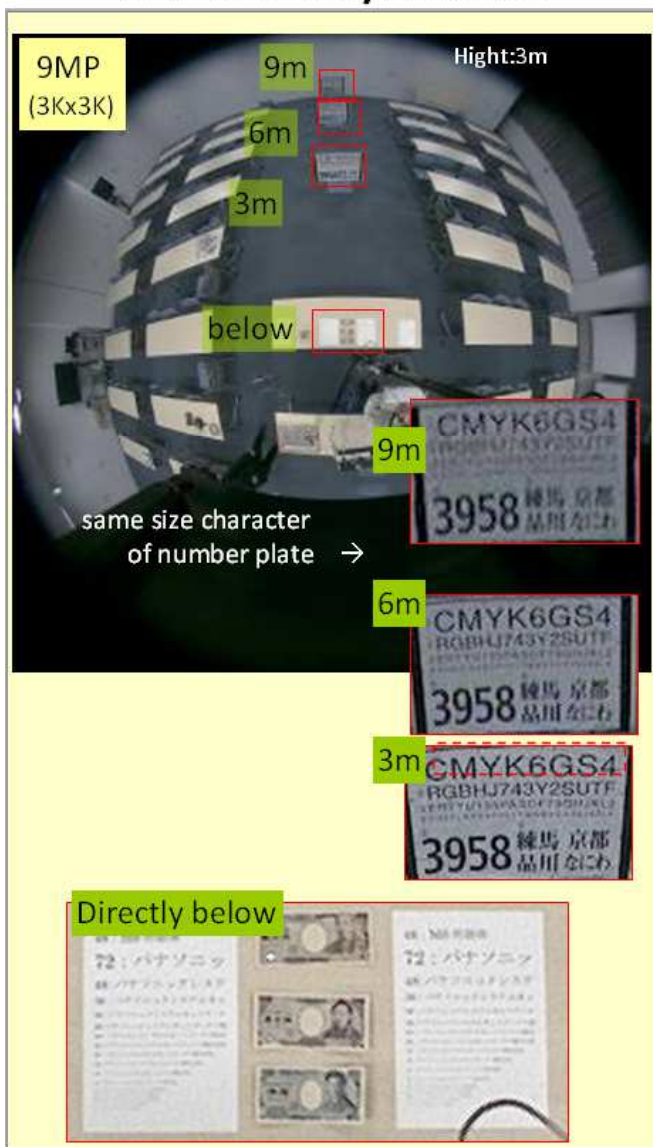


ULTRA High Resolution

9M (3k x 3k) provides high resolution on the bottom and at the edges

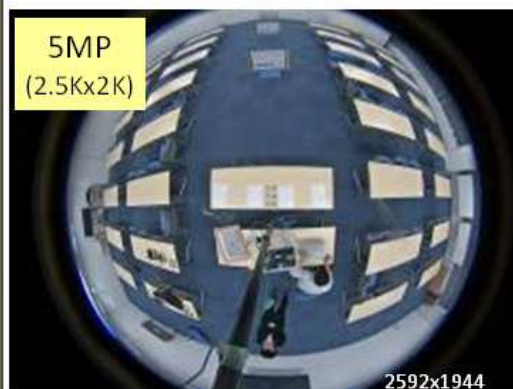
Dealer Price (TBD): \$950 / \$1,200

WV-SFV481/SFN481



\$ 467 (indoor vandal)

AXIS M3007-PV



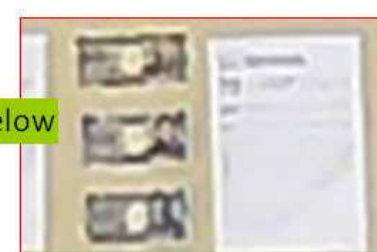
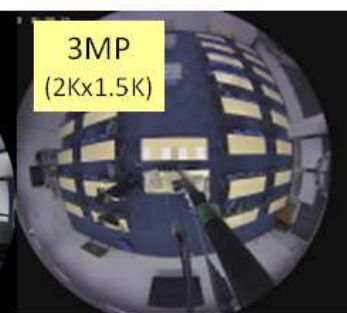
\$ 725 (outdoor)

Sony SNC-HM662



\$ 750 (outdoor)

WV-SW458



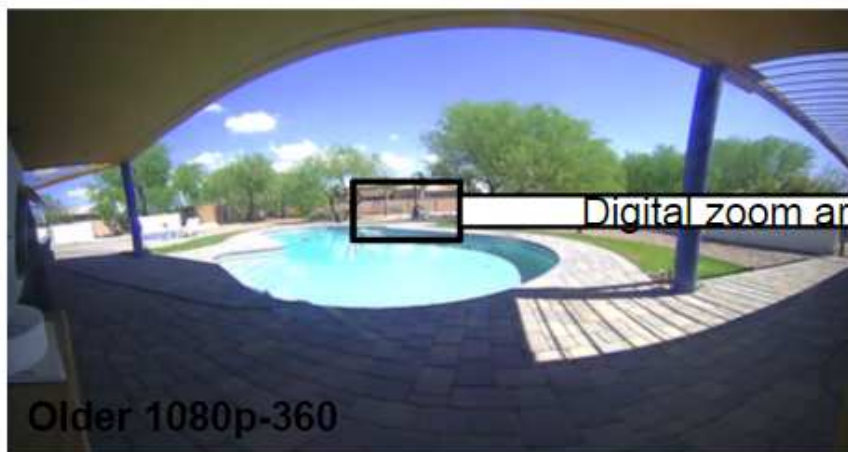
4K images provide digital zoom capabilities on live and playback



Digital zoom area



Digital zoom area

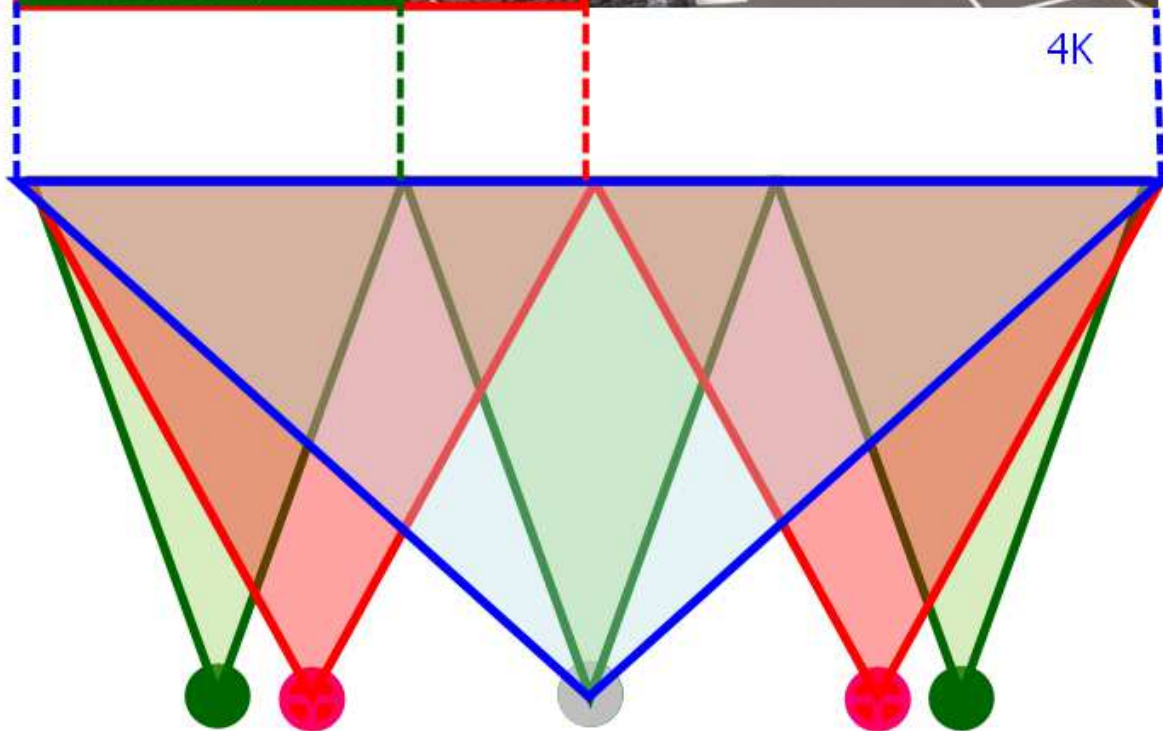


Digital zoom area

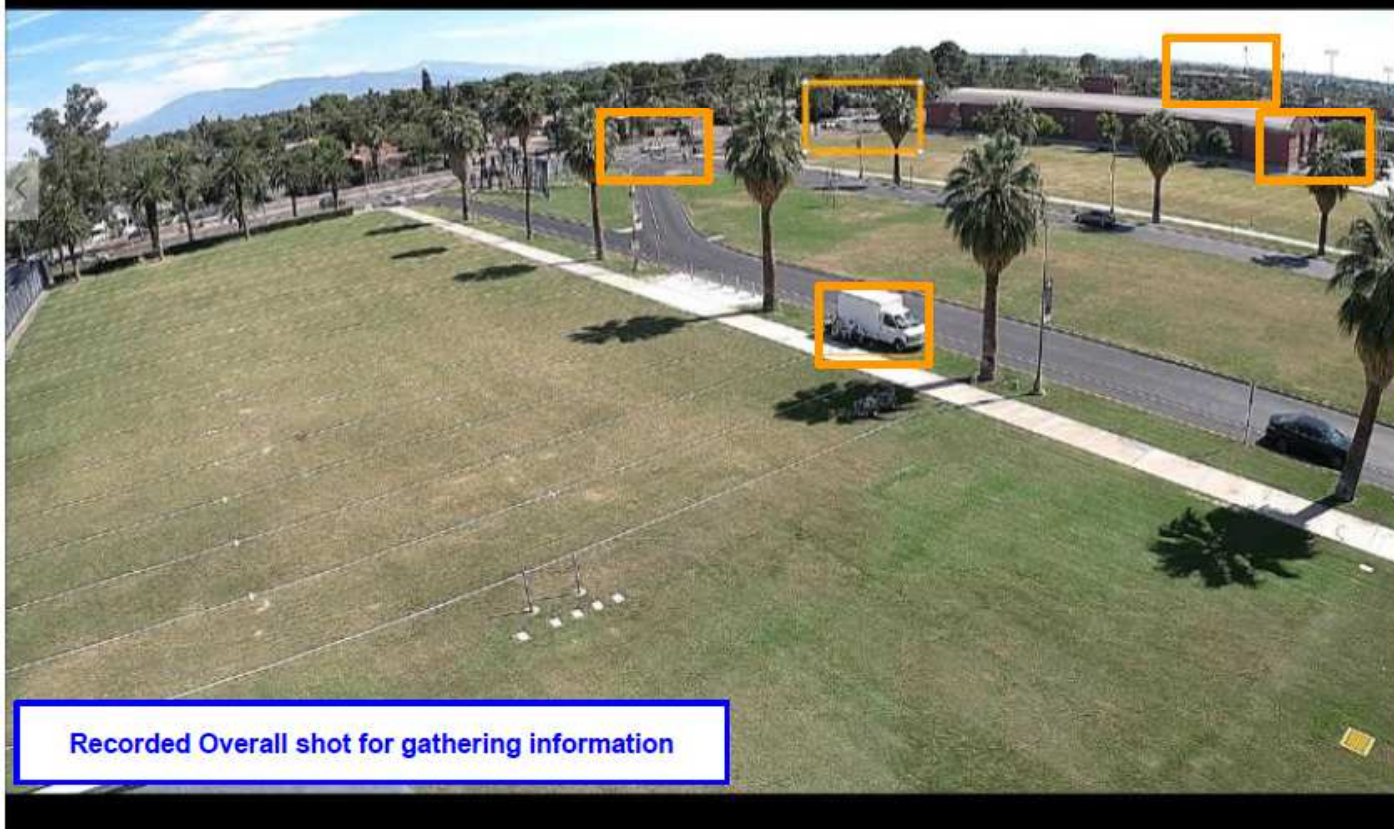




4K



4K digital zoom distances from Open Door Inc example One



4K digital zoom distances from Open Door Inc example Two



4K digital zoom distances from Open Door Inc example Three



Nothing controls picture quality and images per second MORE than the bandwidth from the camera....lower speed...lower image quality with images per second kept constant

WV-SPW781L Panasonic 4K camera



(3840x2160) at 7.5 images per second 6144 kbps

Full HD (1280x1080) at 7.5 images per second 1024 kbps

HD (1280x720) at 15 images per second 512 kbps

HVGA (640x360) at 7.5 images per second 384 kbps

180P (320x180) at 7.5 images per second 256 kbps

160x90 (160x90) at 7.5 images per second 128 kbps



As you lower the speed of the camera your image deteriorates. Efficiency of the camera matters. speed matters. The imager size does not matter...example above is a 12 Meg camera that can produce 4K images. If you do not have the speed you do not get the picture



3840X2160



1280x1080



1280x720

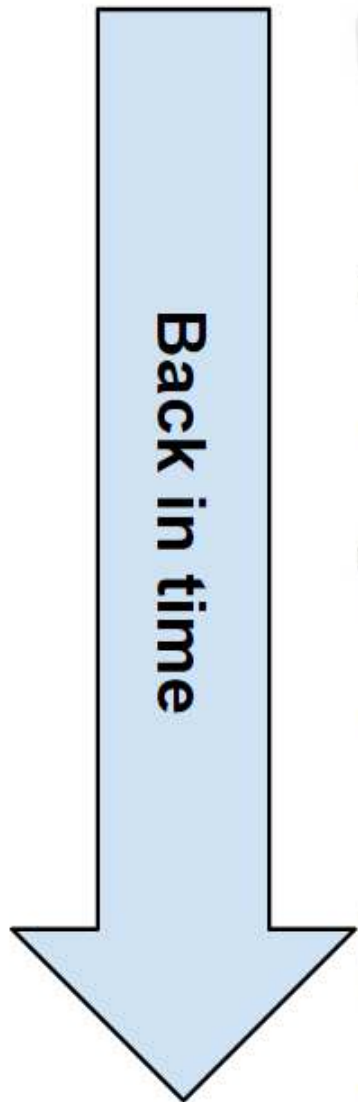


640x360



320x180

New Cameras are more than just features.....the chips get more efficient.....better performance across the network and less storage for the same image retention



WV-SFV631

4 H.264 streams for live viewing on ASM200
15 images per second Full HD 1920x1280 needs **1536 kbps**
16 Cameras recording 30 days 24/7 takes **8.47 TB total**



WV-SW559

2 H.264 streams for live viewing on ASM200
15 images per second Full HD 1920x1280 needs **2048 kbps**
16 Cameras recording 30 days 24/7 takes **11.30 TB total**



WV-NW502

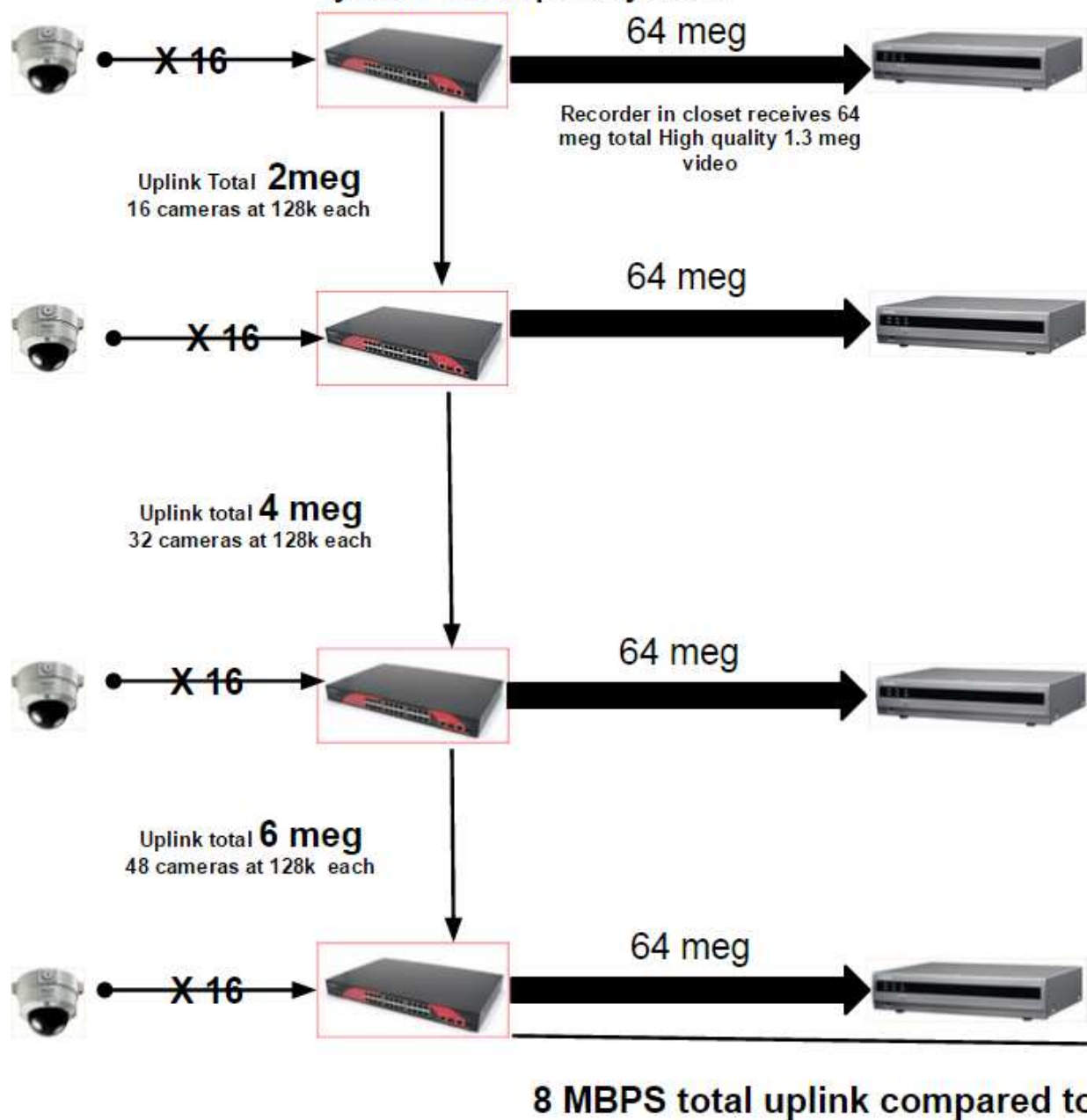
2 H.264 streams for live viewing on ASM200
15 images per second Full HD 1920x1280 needs **3072 kbps**
16 Cameras recording 30 days 24/7 takes **16.95 TB total**



WV-NW484

1 MPEG-4 streams for live viewing on ASM200
15 images per second was **1536 kbps** but..... it could only do **VGA 640x480** compared to **1536 kbps** now giving you **1920x1280** at the same rate

Distributed processing why we need to control speed thru the whole system www.opendeye.com



Autostream from Panasonic will Jump you to the larger recorded stream on Playback or when you call up one live image to full screen. You get the best of both worlds automatically at all times on the computer

Panasonic 64 camera cells being watched produces
8 mbps with 4th stream on 128 kbps per stream. Others would produce **512 mbps**
8 Mbps compared to 512 Mps

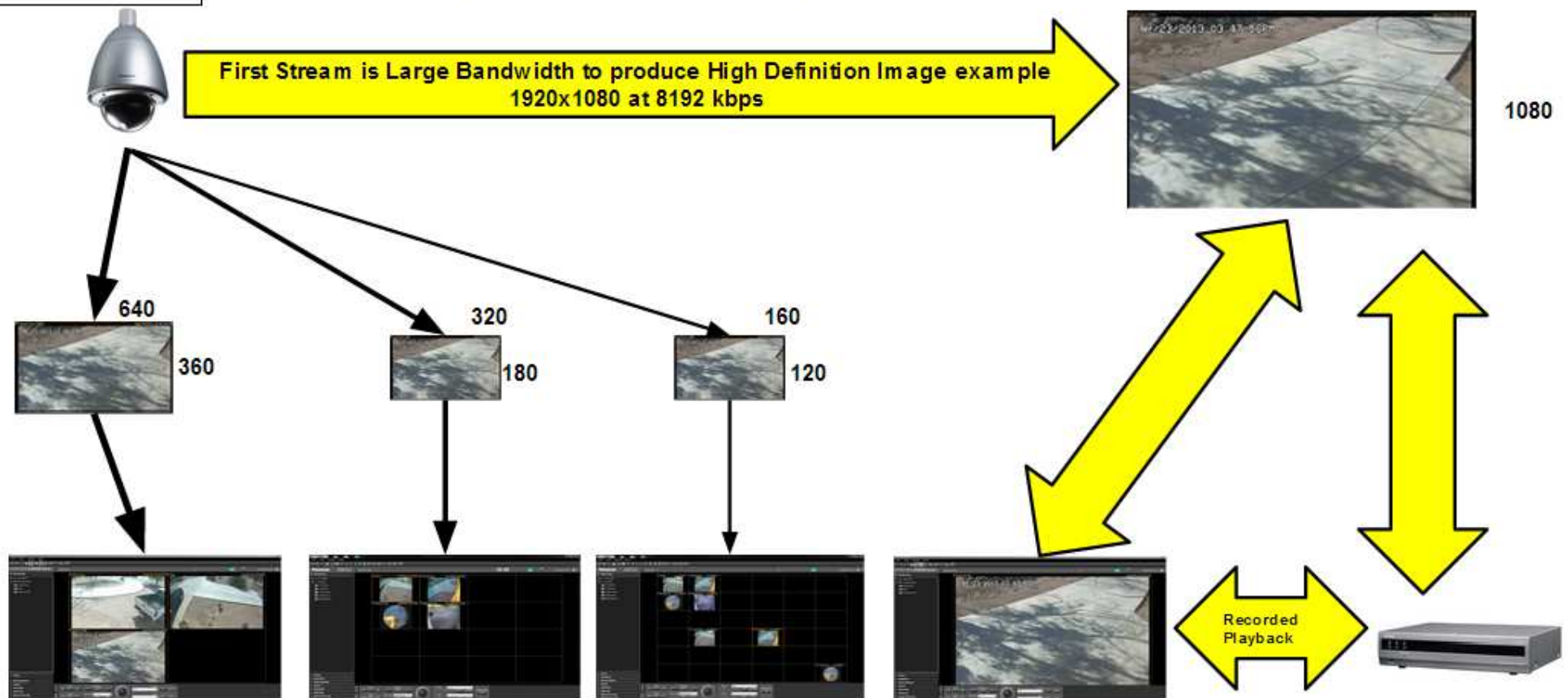


Auto Streaming prevents Network and PC overload for NO benefits to the systems usefulness

Panasonic
Camera produces
4 streams at the
same time

How Quad Streaming works with ASM200 Video management system

Open Door Inc. www.opendeye.com



ASM200 request 2nd stream for live view from cameras when Quad is viewed. Picture too small on screen to use high def streams

512kps per stream

ASM200 request 3rd stream for live view from cameras when 9,16,25 is viewed. Picture too small on screen to use high def streams or 2nd stream

256Kps per stream

ASM200 request 4th stream for live view from cameras when 36 or more is viewed. Picture too small on screen to use high def streams or 2nd or 3rd stream

128kps per stream

ASM200 request 1st stream for live view when one camera is being viewed. Picture is large enough to use high def streams

Panasonic Recorder requests 1st high def stream for recording. ASM200 requests playback from the recorder which plays back all images high def.

How Dual Streaming Streaming works with ASM200 Video management system

Panasonic
Camera
produces two
streams at the
same time

Open Door Inc. www.opendeye.com



First Stream is Large Bandwidth to produce High Definition
Image example 1920x1080 at 8192 kbps

Second Stream is small Bandwidth to produce
low Image example 384 kbps constant bit rate

1920

1080

320

240



Recorded Playback



ASM200 request 2nd stream
for live view from cameras
when more than one camera is
being viewed. Picture too
small on screen to use high def
streams

ASM200 request 1st stream
for live view when one camera
is being viewed. Picture is
large enough to use high def
streams

Panasonic Recorder requests
1st high def stream for
recording. ASM200 requests
playback from the recorder
which plays back all images
high def.

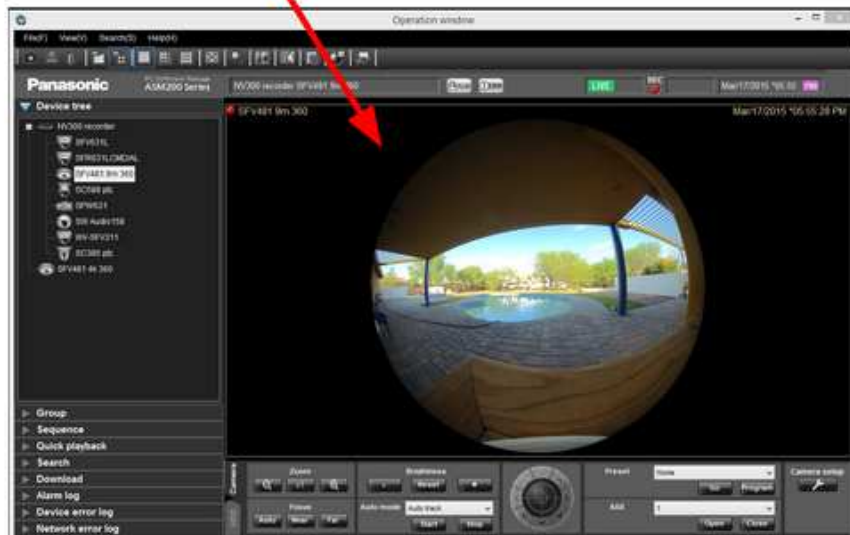
360/180 Cameras from Panasonic have dual streams to control processing power on ASM200 Viewing station....www.opendeye.com



Second stream from the camera is your choice...Quad with predefined areas..Panoramic...Double Panoramic. By processing the data at the camera we do not overtax the processing of the computer. This gives the viewer a more comfortable image to watch while retaining the whole image for Playback

First stream is also called to the ASM200 when viewing one camera for manipulation on Live and Playback

First stream from the camera is sent as full 360 shot so everything in the picture is being recorded



One image brings full image for manipulation



More than one image being viewed live jumps ASM200 over to stream two

Panasonic Distributed Processing lets you GROW your system with Processing and storage

500 WJ-NV200 recorders: 32,000 Mbps processing, 4,000 Tera storage, 8,000 Cameras

500 WJ-NV300 recorders: 64,000 Mbs processing, 76,000 Tera storage, 16,000 Cameras

500 WJ-ND400 recorders: 64,000 Mbps processing, 108,000 Tera Storage, 32,000 Cameras



ASM200 supports 16 camera views at a time on one monitor



ASM200 with ASE201....Supports 20 camera views at a time on up to 2 monitors. the third monitor is for maps and you can add WV-CU950 joystick



ASM200 with ASE202 supports 64 camera views at a time on one monitor



ASM200 with ASE201 and ASE202....Supports 68 camera views at a time on up to 5 monitors. the sixth monitor is for maps and you can add WV-CU950 joystick

Open Door Inc www.opendeye.com

WV-ASE203 lets you talk to 500 Recorders

WV-ASE204 Lets you talk to 10 Decoders

Panasonic ASM200 how it works with monitors from the PC. DON'T FORGET your PC will need monitor outs for each monitor out you want to run. You also need a PC that can handle the amount of video data you decide to run through it

Panasonic 4 stream distribution throughput to monitors examples

Open Door Inc www.opendeye.com



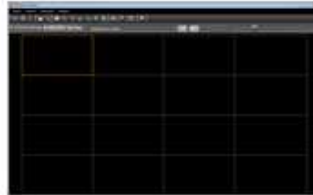
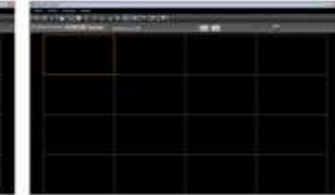
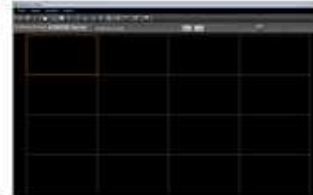
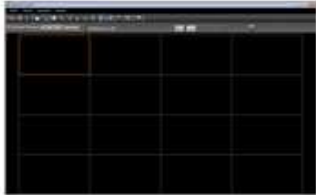
**16 Camera views
producing 4 meg
total Traffic**



**64 Camera views
producing 8 meg
total Traffic**



Single screen producing 6 meg total traffic, 32 camera view producing 4 meg total traffic, 32 camera view producing 4 meg total traffic.....**Total Traffic for all monitors 14 meg**



Quad screen producing 2 meg total traffic, 16 camera view producing 4 meg total traffic, 16 camera view producing 4 meg total traffic.....**Total Traffic for all monitors 10 meg**

Quad screen producing 2 meg total traffic, 16 camera view producing 4 meg total traffic, 16 camera view producing 4 meg total traffic, 16 camera view producing 4 meg total traffic, 16 camera view producing 4 meg total traffic.....**Total Traffic for all monitors 10 meg**



Quad screen producing 2 meg total traffic, 32 camera view producing 4 meg total traffic, 32 camera view producing 4 meg total traffic.....**Total Traffic for all monitors 10 meg**

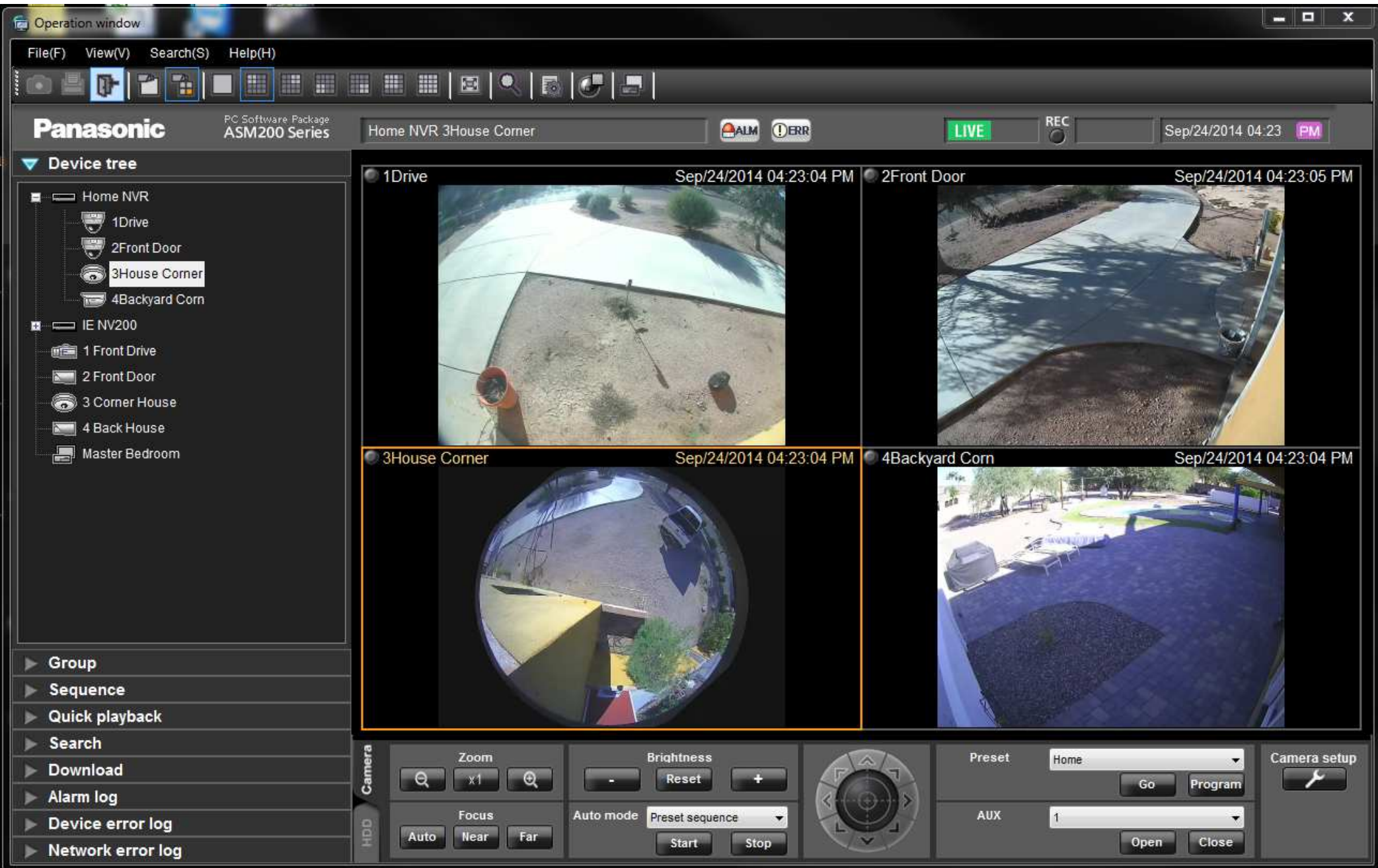
Panasonic Camera stream settings

**Stream 1 max bit rate 6 meg
Stream 2 constant bit rate 512k
Stream 3 constant bitrate 256k
Stream 4 constant bit rate 128k**



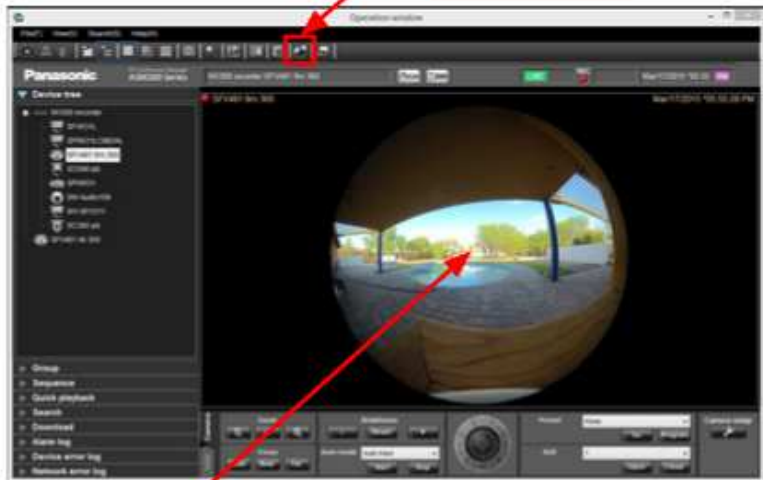
A worst case scenario would be all 5 screens on stream one or One image on the screen of all monitors but this can be controlled thru programming**Total Traffic for all monitors 30 meg**

What the ASM200 Operation software looks like

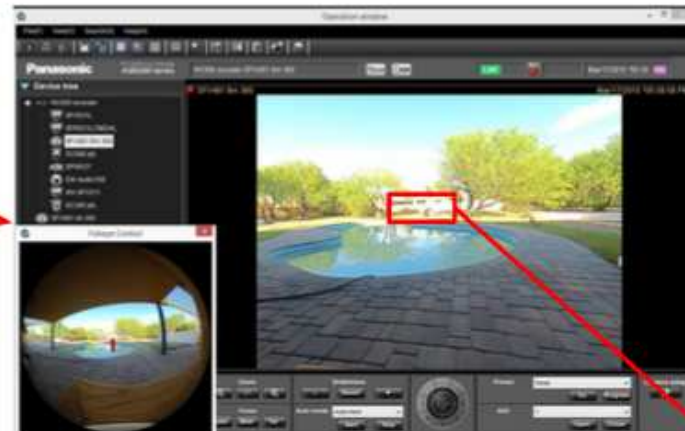
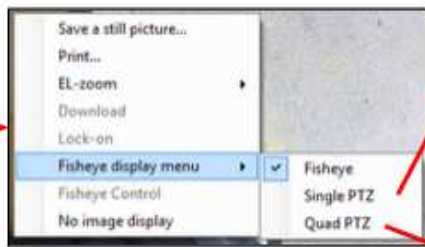


ASM200 Control of 360/180 cameras on first stream.....www.opendeye.com

Fisheye control....lets you see where the shots are placed. Drag number in picture to desired location and the shot follows. Fisheye window is updated from live or playback so tracking object is easy

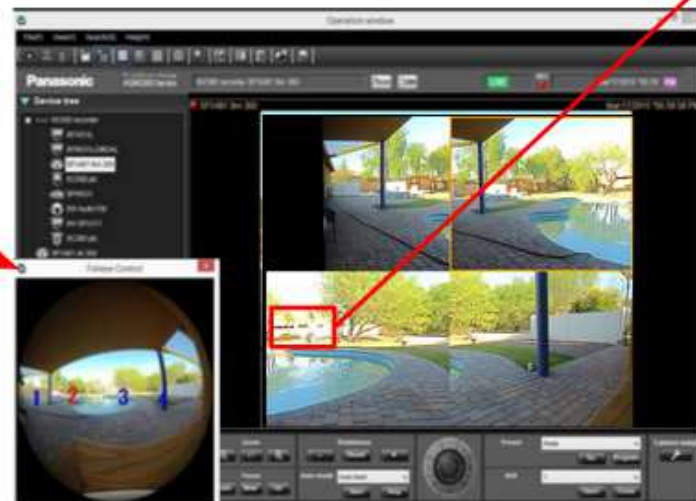


RIGHT click on the image in full screen allows manipulation of the 360/180 Panasonic first stream from camera..Live or playback



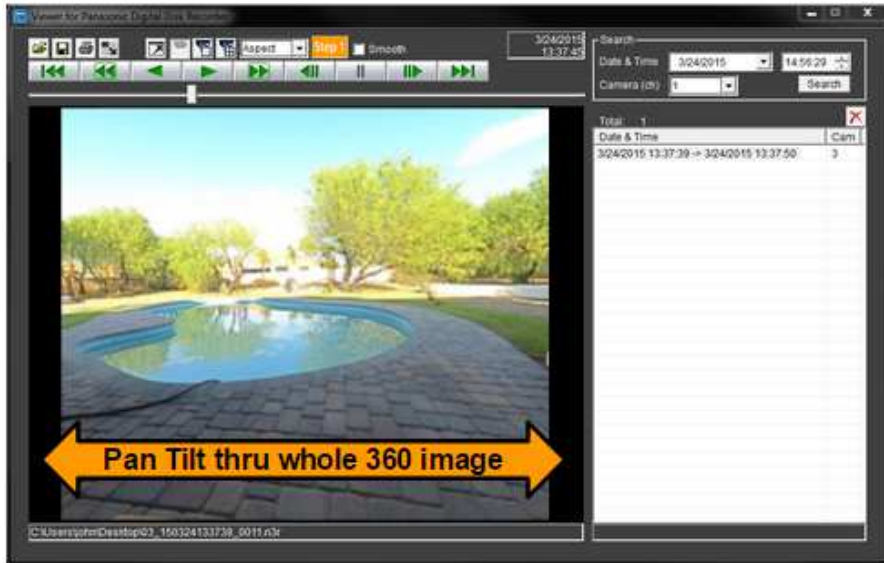
Single PTZ

Drag and Zoom anywhere in the image for an area of interest and image follows

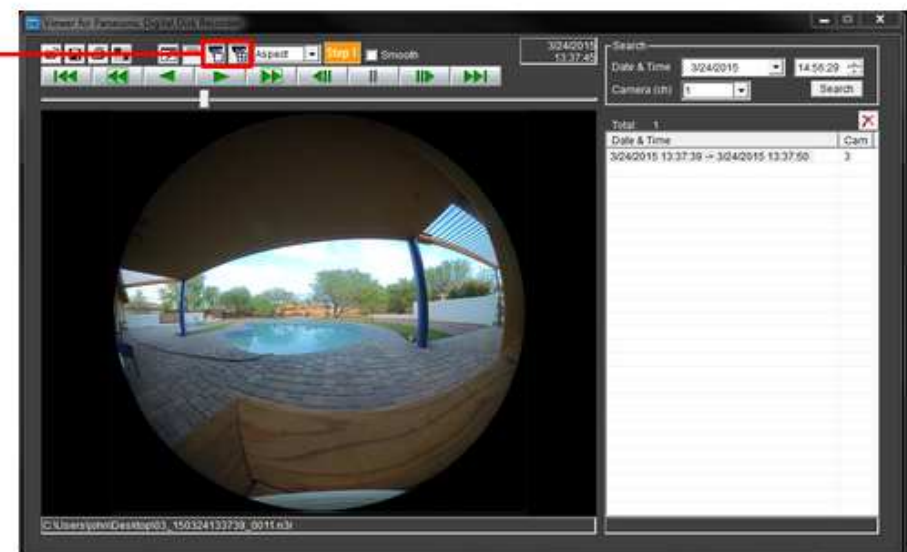


Quad PTZ

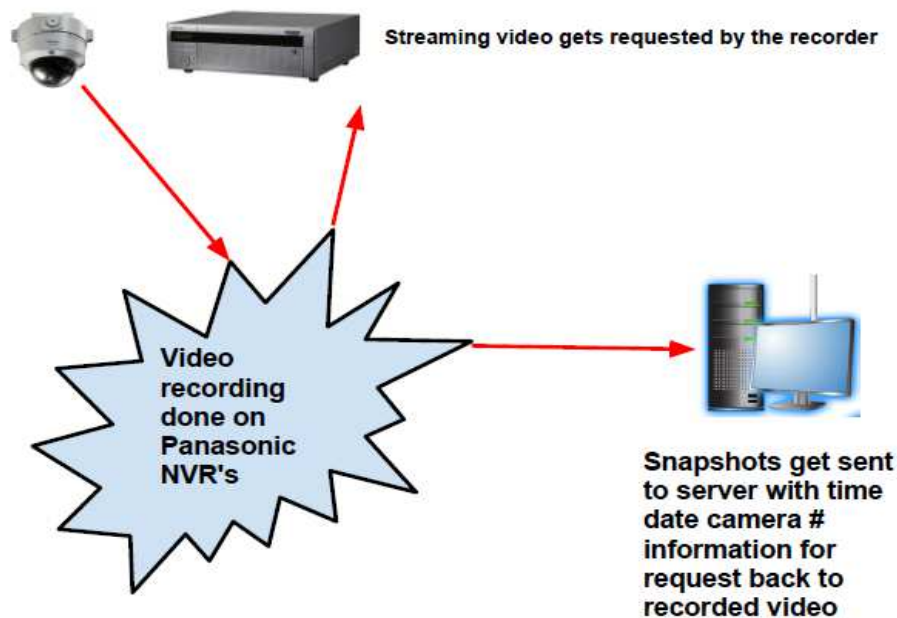
Panasonic Viewer player for playback manipulation of 360/180 Panasonic cameras



Select whole 360 image, single image or quad image on playback image with viewer player



Panasonic face detection intelligent search



Search all faces from camera and time

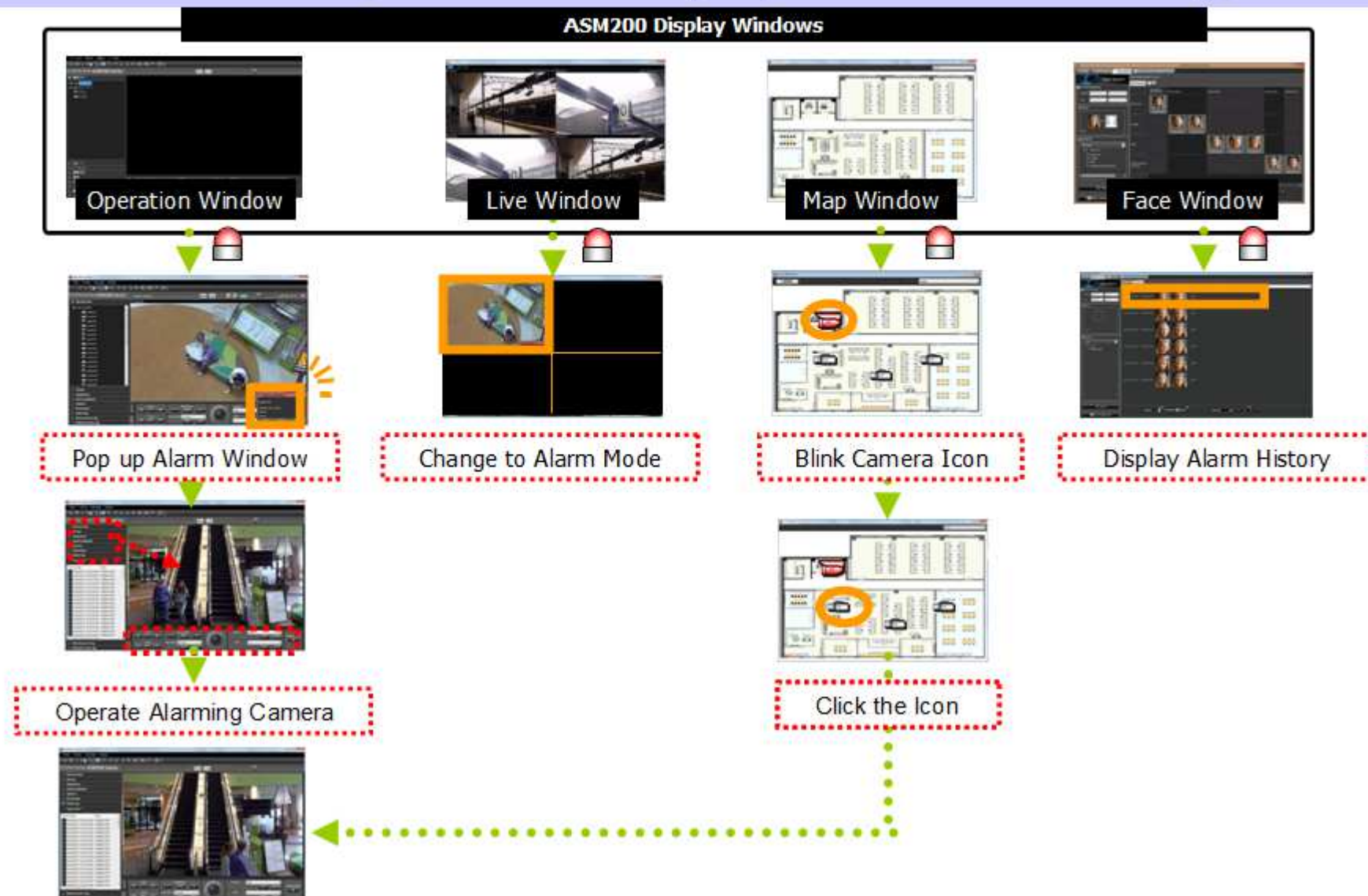


Identify person of concern to limit search



Pick cameras and times and now you know what video to play

There are some patterns of display when an alarm happens



Face Images in Face Matching Server data base can be re-searched anytime

- There are 2 modes of result display: (1) sorted by camera (2) sorted by similarity
- Can narrow the search result with cameras, a face image or day/time information

Screen image

The search result is displayed by camera in horizontal lines, and the list of a camera is displayed in chronological order

The search result is displayed in the order of similarity, which means the most likely face images are listed as top priorities

Narrow your search with day/time information

Narrow your search with a face image

Narrow your search with cameras



(Display sorted by camera)



(Display sorted by similarity)

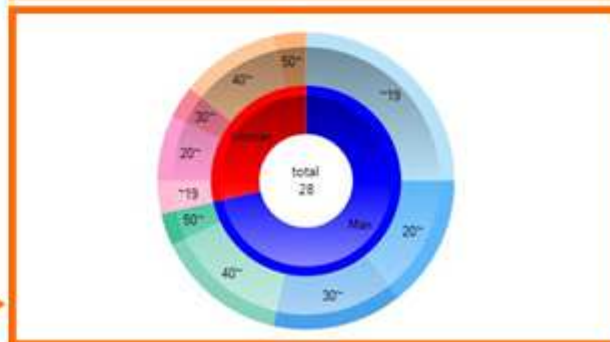
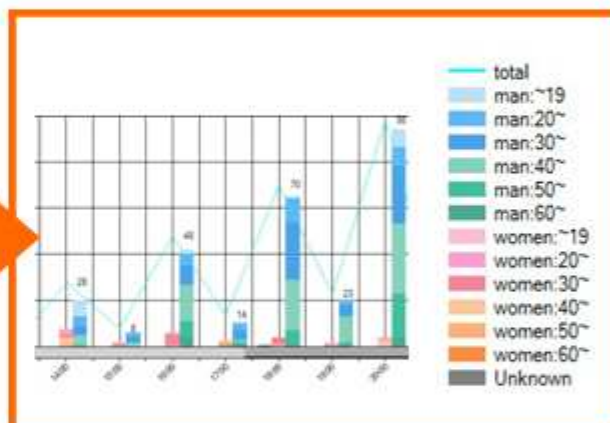
Statistical chart of age / gender judgment and people counting is displayed

- The detected face images are evaluated for age / gender judgment and counted
- The results are displayed on screen as statistical chart
- The statistical chart can be saved in CSV format

Screen image



The chart can be displayed in every 15minutes/30minutes/1 hour/1 day/1 month basis



[Face matching in real-time]

	ASF900	NV200/NVF20
The number of face detection camera which can be connected	10 cameras is suitable, Up to 20 cameras per 1 server *Deploying plural face servers in a system is acceptable.	1 camera per 1 recorder
The number of registered face images	1000 faces	64 faces (In case NVF20 does not have the extended license:16 faces)
File extension of registered face images for import	BMP, JPG, PNG	None
Face collation speed	Within 1 second per 120 faces (i.e. multiplication of 20 people by 6 faces)	1 second per 2 faces (NV200) 1 second per 4 faces (NVF20)
Collation sensitivity	Can be set every face individually (*This function is supported by the special application in the Ver.2.0)	Can be set in a batch

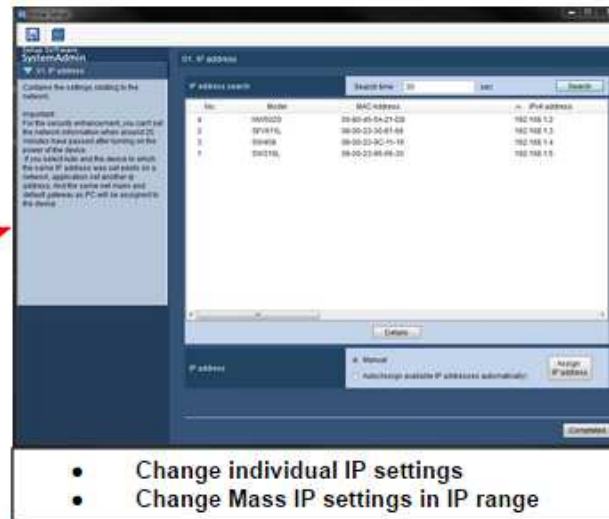
[Face search]

	ASF900	NV200/NVF20
Maximum number of registered face images	Maximum 10 million faces *ASF900 ver1.xx supports only maximum 5 million faces	None
Face search speed	3 seconds per 5 million faces (*It varies depending on the number of the search results)	None

[People counting/Age and gender judgment]

	ASF900	NV200/NVF20
Calculation and display	Can be displayed by cameras and in total	Can be done by using another application software

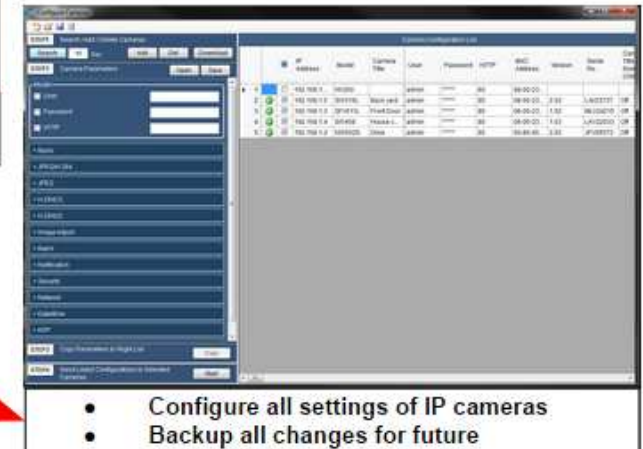
Panasonic Security System Configuration Tool....Control of the complete system



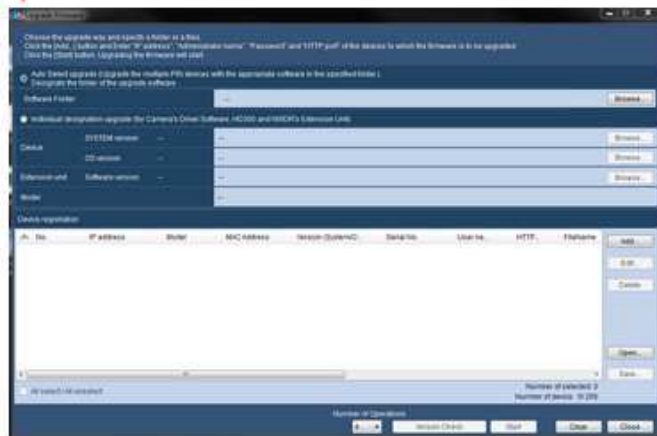
- Change individual IP settings
- Change Mass IP settings in IP range

Open door Link (All Tools and Complete Firmware Update file)

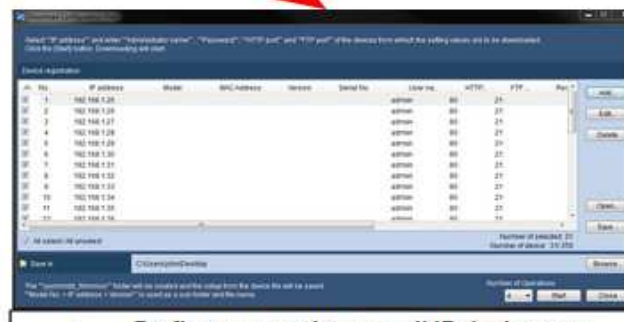
http://www.opendeye.com/index.php?option=com_content&view=category&id=98&Itemid=155



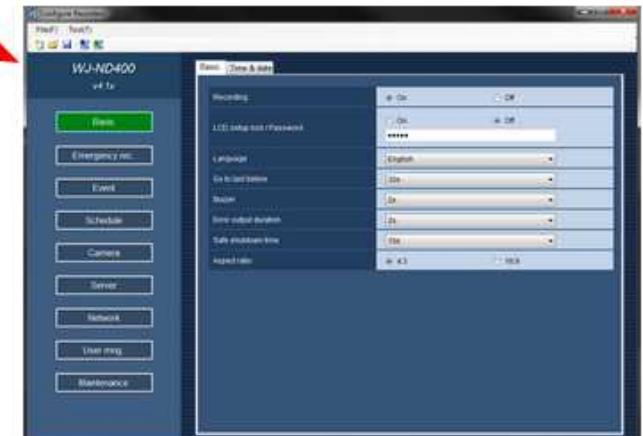
- Configure all settings of IP cameras
- Backup all changes for future



- Complete backup of the whole system in one shot
- Upload system backup to a device level or in mass
- Download log files for Panasonic assistance

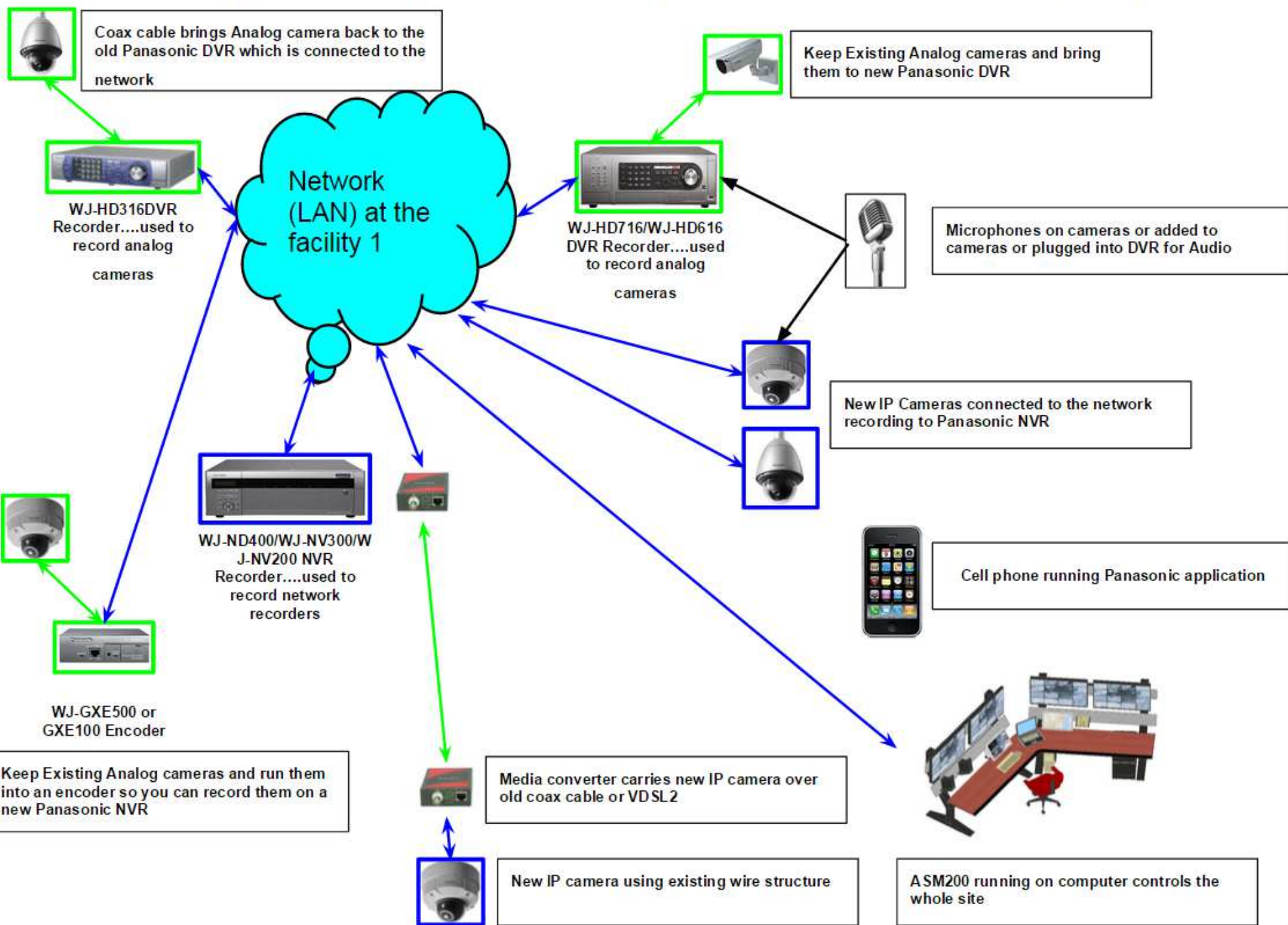


- Do firmware updates to all IP devices on the system
- One firmware file Update all devices
- Downloadable file with all firmwares...point to the file and everything is updated correctly



- Configure all your recorder settings
- Backup Recorder settings

All component parts come together in an IP design.....Open Door inc.....www.opendeye.com



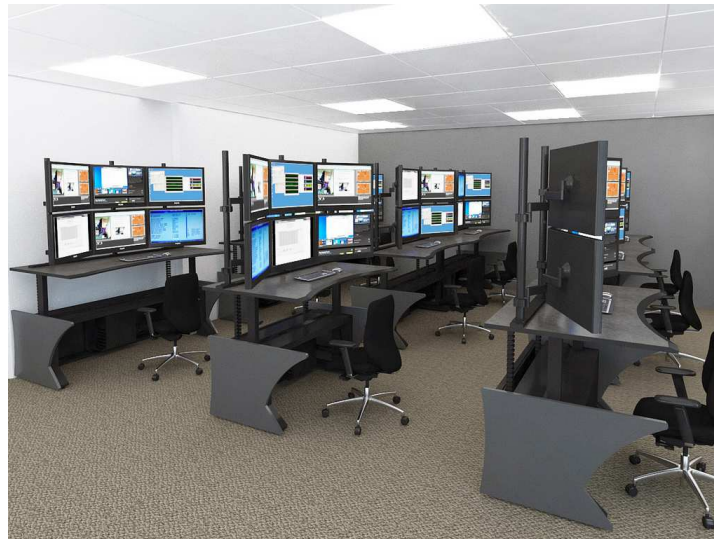
Sightline



E-Soc



Slatewall





The Product Family

Infrared



True Hybrid



White



SIMPLE

NuOPTIC

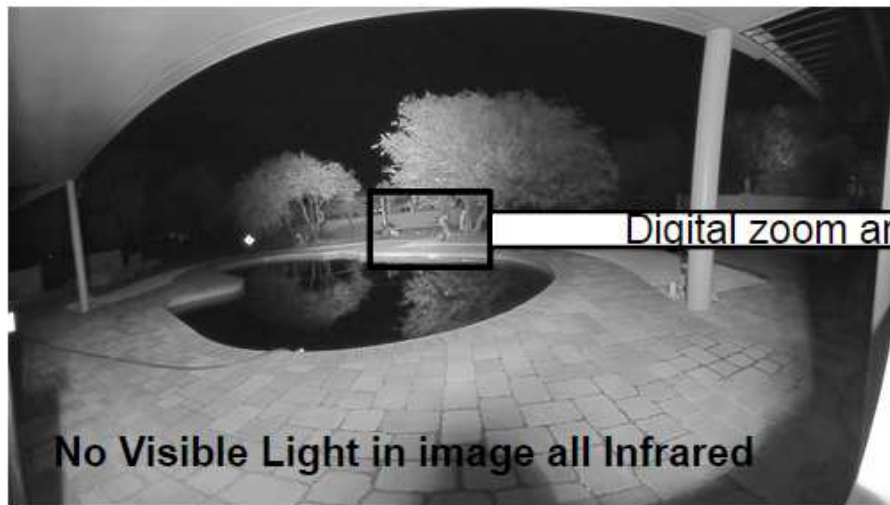


New 4 K WV-SFV481, WV-SFN480 with single NuOptic
Infrared light for night shots www.opendeye.com



Digital zoom area

New 4K image



Digital zoom area

No Visible Light in image all Infrared



NuOPTIC



Continuous Variable Angel....Put the light on target
Adjustable Power Range....No blown out images
Photocell Level Adjustments...so the light comes on at desired low light level automatically



RS485/RS232 communications
Digital input/output interfaces
Continuously variable angle
Adjustable power range
Photocell level adjust



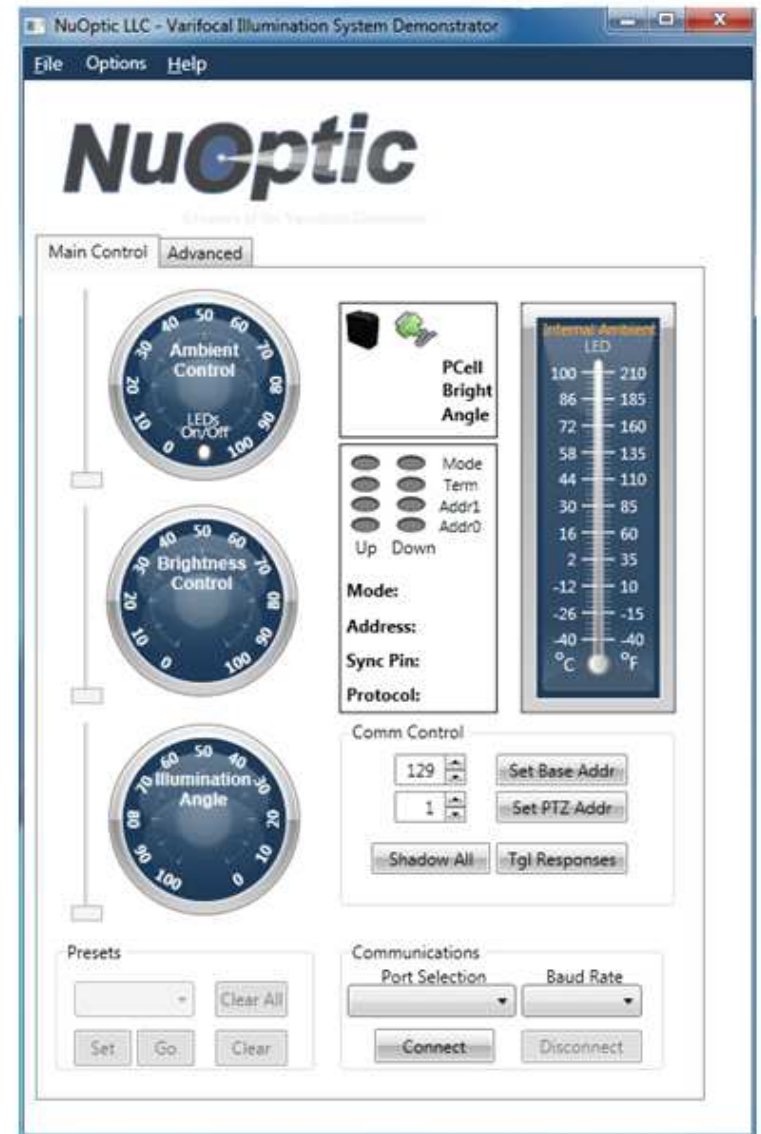
Inventory

- Varifocal illumination means every beam angle in one unit
- True Hybrid means infrared and white light in one unit
- One 80W VIS illuminator is capable of demonstrating the performance of the entire NuOptic product line (and replacing racks full of competitive products)



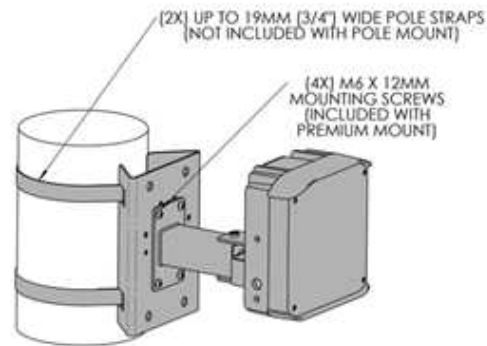
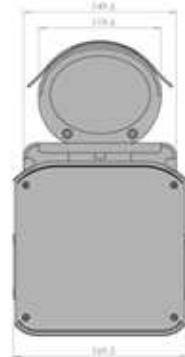
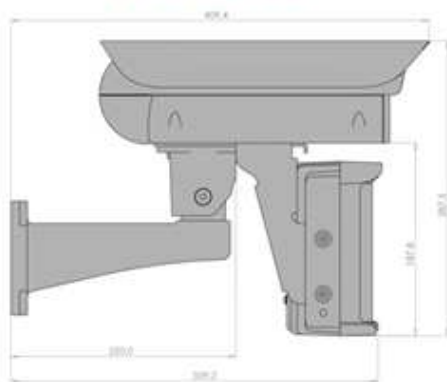
Control

- Manual control knobs on the back of each unit
- Remote monitoring and control using Pelco-D protocol via RS485/RS232
- 64 presets for integration with PTZ cameras

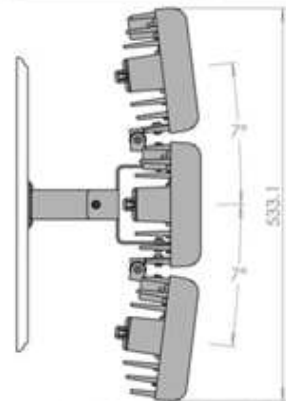


Accessories

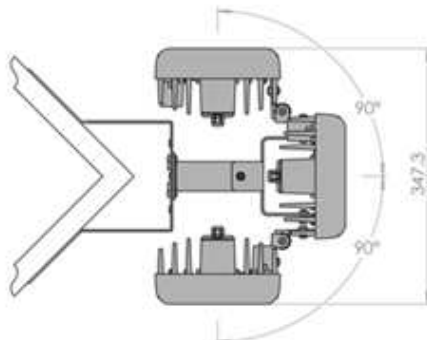
- Every mount for any configuration required



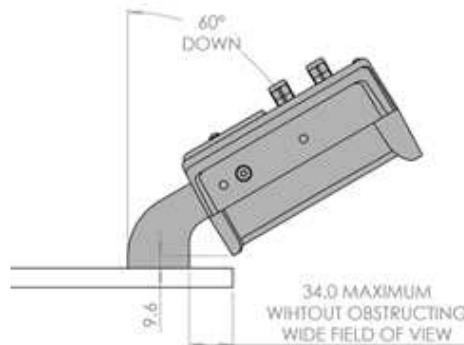
POLE MOUNT WITH PREMIUM PAT/TILT MOUNT



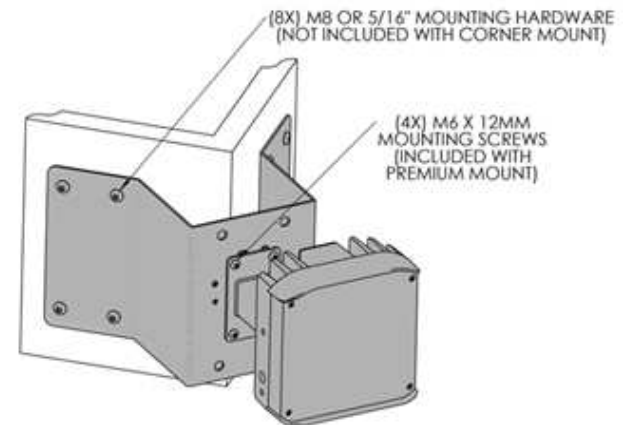
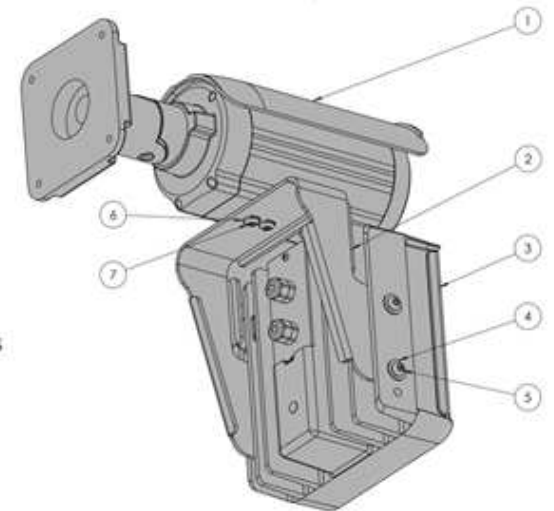
7 DEGREE DIVERGENCE FOR TANGENT FIELDS OF VIEW AT NARROW SETTINGS



90 DEGREE DIVERGENCE FOR TANGENT FIELDS OF VIEW AT WIDEST SETTINGS WITH POLE OR CONER MOUNTS



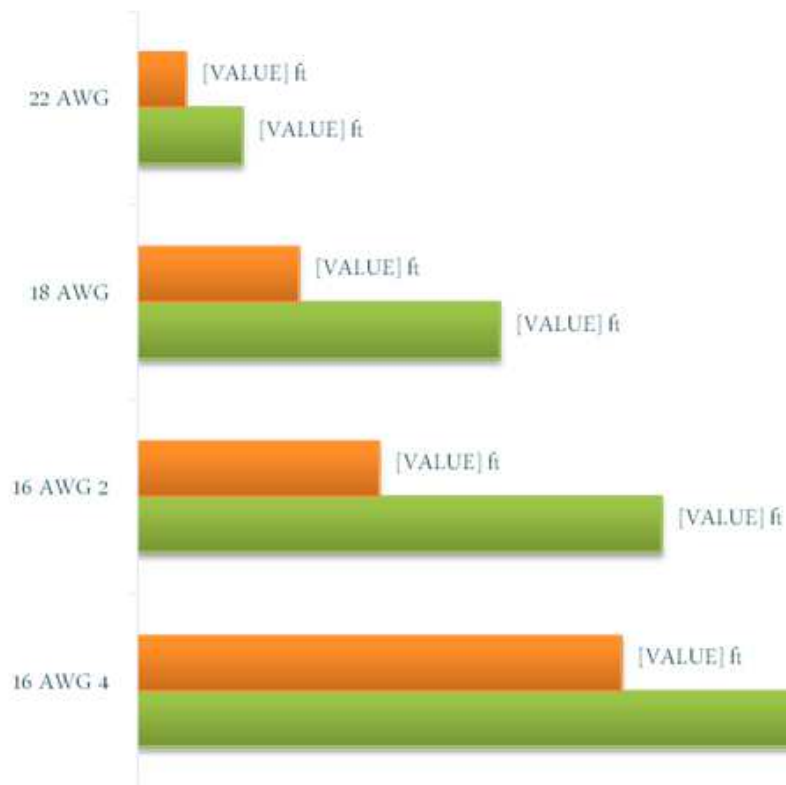
34.0 MAXIMUM WITHOUT OBSTRUCTING WIDE FIELD OF VIEW



CORNER MOUNT WITH PREMIUM PAT/TILT MOUNT

Power Supply

Standard 24V AC vs NuOptic 36V DC



Distances based on a single 40W VIS illuminator and 60W power supply

- Over twice the distance when using a NuOptic power supply
- Designed to work with the VIS illuminators



Industrial Managed Switches Consideration



- RJ-45 port supports Auto MDI/MDI-X
- Supports STP/RSTP/MSTP
- Redundancy Ring < 20ms over 250units
- 802.1Q Tag VLAN for flexible network planning
- Port Mirror for traffic monitoring & diagnosis
- Security: 802.1X/RADIUS support
- IGMP Snooping for multicast service
- 802.1p CoS (QoS) increase determinism
- Support 100Fx Multi/Single mode SC/ST
- Support 1000Tx, Gigabit Fiber SFP/XFP
- Support 802.3af or 802.3at
- Dual DC Inputs, 12~48VDC

Industrial Ethernet Switches

LMP-0600 Series



- Industrial Managed PoE+ Ethernet Switch**
- ▶ Network Broadcast Storm Protection
 - ▶ 4-Ports IEEE 802.3at Compliant
 - ▶ Network Redundancy; RSTP and G.8032 ERPS
 - ▶ PoE Ping Alarm Function

LNP-0500 & 0600 Series



- Industrial Unmanaged PoE+ Ethernet Switch**
- ▶ Network Broadcast Storm Protection
 - ▶ 4-Ports IEEE 802.3at Compliant
 - ▶ Surge and ESD Protection
 - ▶ Extended Operating Temperature

LNP-0500-24 & 800-24 Series



- Industrial Unmanaged PoE+ Ethernet Switch w/ Low Input Voltage Requirements**
- ▶ Low Voltage Input of 24VDC
 - ▶ Network Broadcast Storm Protection
 - ▶ 4-Ports IEEE 802.3at Compliant
 - ▶ Surge and ESD Protection

LNx-0501/0602



- Industrial Unmanaged Ethernet Switch w/ Fiber Connectivity**
- ▶ Network Broadcast Storm Protection
 - ▶ Surge and ESD Protection
 - ▶ Supports Auto MDI/MDI-X Function
 - ▶ Integrated Fiber Port

Industrial Serial Connectivity

STW-611/612C



- Industrial IEEE 802.11b/g/n Wireless Serial Device Server w/ Bridging Capabilities**
- ▶ 3-Way Communication w/ any Serial or Ethernet Device to Wireless Network
 - ▶ Wi-Fi Direct Technology (Point-to-Point easy setup)
 - ▶ RS232/422/485 Software Selectable Ports
 - ▶ IEEE 802.11b/g/n

STF-401C



- Industrial Serial RS-232/422/485 To Fiber Converter**
- ▶ Serial (RS232/422/485) to Fiber (SC/ST; Single-mode/ Multi-mode) Converter
 - ▶ Wide DC Voltage Input Range
 - ▶ Fan-less and Din-Rail Design for Harsh Industrial Environment
 - ▶ Reverse Polarity Protection

STF-500 Series



- Industrial Serial RS-232/422/485 To Fiber Converter w/ Surge and Isolation Protection**
- ▶ Daisy Chain Network Applications
 - ▶ Serial (RS232/422/485) to Fiber (SC/ST; Single mode/ Multi-mode) Converter
 - ▶ Wide DC Voltage Input Range
 - ▶ Fan-less and Din-Rail Design for Harsh Industrial Environment

STE-700 Series



- Industrial Rack-Mount Serial Server w/ Dual LAN Redundancy**
- ▶ 1U 19" Rack-Mount Metal Housing Design
 - ▶ 8 or 16 Ports of RS-232 or RS-422/485
 - ▶ High EMC Protection, 2.5KV Isolation Protection for RS-422/485
 - ▶ Daisy Chain Ethernet, Network Redundancy, Data Redundancy Network

Industrial Wireless

APX-110N5 / 120N5



- Outdoor IP67 IEEE 802.11a/n Wireless Bridge**
- ▶ Preconfigured Plug-and-Play Wireless Bridge (optional)
 - ▶ IP67 Outdoor Waterproof Housing Design
 - ▶ AP/Client/Bridge IEEE 802.11a/n
 - ▶ Internal Antenna Signal Strength Indication Through Web Console

APN-320N



- Industrial Wireless IEEE 802.11a/b/g/n Dual Radio Access Point/Client/Bridge/Repeater**
- ▶ Single Unit Design Featuring Dual Independent Radios
 - ▶ AP/Client/Bridge/Repeater IEEE 802.11a/b/g/n
 - ▶ Industrial MIMO Wireless Solution
 - ▶ IEEE 802.11i & 802.1x Security

APX-3200



- Outdoor IP67 Industrial HighPower Wireless 802.11b/g/n Access Point/Client/Bridge**
- ▶ IP67 Outdoor Waterproof Housing Design
 - ▶ AP/Client/Bridge/Repeater IEEE 802.11b/g/n
 - ▶ Industrial MIMO Wireless Solution
 - ▶ IEEE 802.11i & 802.1x Security

APX-5000 Series



- Gigabit Outdoor IP67 Industrial High-Power Wireless 802.11a/b/g/n Access Point/Client/Bridge**
- ▶ IP67 Outdoor Waterproof Housing Design
 - ▶ Dual Independent Radio Model Available
 - ▶ AP/Client/Bridge/Repeater IEEE 802.11a/b/g/n
 - ▶ IEEE 802.11i & 802.1x Security

Ethernet Media Extender

EVC-3001



- VDSL2 to Ethernet Extender**
- ▶ VDSL2 (RJ11) Profile Bridge Solution
 - ▶ Supports Voice and Data Transmission Simultaneously
 - ▶ All-in-One Design, Master / Slave Selectable via DIP Switch
 - ▶ DMT (discrete Multi-Tone) Line Coding

EVC-3010



- Coaxial to Ethernet Extender**
- ▶ 17a CO / CPE (BNC Coaxial) Bridge Solution
 - ▶ Standalone Transceiver for Simple Bridge Modem Application
 - ▶ All-in-One Design, Master / Slave Selectable via DIP Switch
 - ▶ DMT (discrete Multi-Tone) Line Coding

IVC-4011-T



- Industrial VDSL2 or Coaxial to Multi-Port Ethernet Extender**
- ▶ 4* 10/100Tx RJ45 Port, 1* RJ11 or 1* BNC Coaxial Port
 - ▶ All-in-One Design, Master / Slave Selectable via DIP Switch
 - ▶ VDSL2 Standalone Transceiver for Simple Bridge Modem Application
 - ▶ Asymmetric (Band Plan 998) and Symmetric (Band Plan 997) for Transmission of Upstream and Downstream Signals



LNP-0500

5-Port Industrial Ethernet Switch with 4 PoE+ Ports

\$196.00

Quantity:

ADD TO CART



LNP-0500-T

5-Port Industrial Ethernet Switch with 4 PoE Ports, EOT (-40°C - 80°C)

\$235.00

Quantity:

ADD TO CART



LNP-0500-24

5Port Industrial PoE+ Unmanaged Ethernet Switch with 4*10/100Tx (30W/Port) + 1*10/100Tx, 12~36VDC

\$279.00

Quantity:

ADD TO CART



LNP-0500-24-T

5Port Industrial PoE+ Unmanaged Ethernet Switch, 4*10/100Tx (30W/Port) + 1*10/100Tx, 12~36VDC, EOT: -40~75C

\$299.00

Quantity:

ADD TO CART



LNP-0501-M-T

5-Port Industrial PoE+ Unmanaged Ethernet Switch with 4x10/100TX (30W/Port) and 1x100FX, MM 2KM, EOT (-40°C - 80°C)

\$295.00

Quantity:

ADD TO CART



LNP-0501-M-24

5Port Industrial PoE+ Unmanaged Ethernet Switch, 4*10/100Tx (30W/Port) + 1*100Fx MM (2KM)
SC, 12VDC-36VDC

\$379.00

Quantity:

ADD TO CART



LNP-0501-M-24

5Port Industrial PoE+ Unmanaged Ethernet Switch, 4*10/100Tx (30W/Port) + 1*100Fx MM (2KM)
SC, 12VDC-36VDC

\$379.00

Quantity:

ADD TO CART



LNP-0501-M-24-T

5Port Industrial PoE+ Unmanaged Ethernet Switch, 4*10/100Tx (30W/Port) + 1*100Fx MM (2KM)
SC, 12VDC-36VDC, EOT: -40~75C

\$415.00

Quantity:

ADD TO CART



LNP-0501-S3

5-Port Industrial PoE+ Unmanaged Ethernet Switch with 4x10/100TX (30W/Port) and 1x100FX, SM
30KM

\$299.00

Quantity:

ADD TO CART



LNP-0501-S3-T

5-Port Industrial PoE+ Unmanaged Ethernet Switch with 4x 10/100TX (30W/Port). and 1x 100FX,
SM 30KM, EOT (-40°C - 80°C)

\$339.00

Quantity:

ADD TO CART

NEW

LNP-0501-S3-24

5Port Industrial PoE+ Unmanaged Ethernet Switch, 4*10/100Tx (30W/Port) + 1*100Fx SS (30KM) SC, 12VDC-36VDC

\$385.00

Quantity:

ADD TO CART

NEW

LNP-0501-S3-24-T

5Port Industrial PoE+ Unmanaged Ethernet Switch, 4*10/100Tx (30W/Port) + 1*100Fx SS (30KM) SC, 12VDC-36VDC, EOT: -40~75C

\$419.00

Quantity:

ADD TO CART

NEW

LNP-0501-ST-M

5-port Industrial PoE+ Unmanaged Ethernet Switch with 4x10/100TX (30W/Port) and 1x 100FX, MM 2KM , ST Connectors

\$259.00

Quantity:

ADD TO CART

NEW

LNP-0602-M

6Port Industrial PoE+ Unmanaged Ethernet Switch, 4*10/100Tx (30W/Port), 2*100Fx MM (2KM) SC

\$319.00

Quantity:

ADD TO CART

NEW

LNP-0602-M-T

6Port Industrial PoE+ Unmanaged Ethernet Switch, 4*10/100Tx (30W/Port), 2*100Fx MM (2KM) SC, EOT: -40~75C

\$355.00

Quantity:

ADD TO CART



LNP-0602-S3

6Port Industrial PoE+ Unmanaged Ethernet Switch, 4*10/100Tx (30W/Port), 2*100Fx SS (30KM) SC

\$329.00

Quantity:

ADD TO CART



LNP-0602-S3-T

6Port Industrial PoE+ Unmanaged Ethernet Switch, 4*10/100Tx (30W/Port), 2*100Fx SS (30KM) SC, EOT: -40~75C

\$369.00

Quantity:

ADD TO CART



LNP-0602-ST-M

6Port Industrial PoE+ Unmanaged Ethernet Switch, 4*10/100Tx (30W/Port), 2*100Fx MM (2KM) ST

\$319.00

Quantity:

ADD TO CART



LNP-0602-ST-M-T

6Port Industrial PoE+ Unmanaged Ethernet Switch, 4*10/100Tx (30W/Port), 2*100Fx MM (2KM) ST, EOT: -40~75C

\$355.00

Quantity:

ADD TO CART



LNP-0602-ST-S3

6Port Industrial PoE+ Unmanaged Ethernet Switch, 4*10/100Tx (30W/Port), 2*100Fx SS (30KM) ST

\$329.00

Quantity:

ADD TO CART



LNP-0602-ST-S3-T

6Port Industrial PoE+ Unmanaged Ethernet Switch, 4*10/100Tx (30W/Port), 2*100Fx SS (30KM)
ST, EOT: -40~75C

\$369.00

Quantity:

ADD TO CART



LNP-0800

8Port Industrial PoE+ Unmanaged Ethernet Switch with 8*10/100Tx (30W/Port)

\$319.00

Quantity:

ADD TO CART



LNP-0800-T

8Port Industrial PoE+ Unmanaged Ethernet Switch, 8*10/100Tx (30W/Port), EOT: -40~75C

\$349.00

Quantity:

ADD TO CART



LNP-0800-24

8Port Industrial PoE+ Unmanaged Ethernet Switch, 8*10/100Tx (30W/Port), 12VDC-36VDC

\$435.00

Quantity:

ADD TO CART



LNP-0800-24-T

8Port Industrial PoE+ Unmanaged Ethernet Switch, 8*10/100Tx (30W/Port), 12VDC-36VDC, EOT:
-40~75C

\$465.00

Quantity:

ADD TO CART



LNP-0802-M-24

8Port Industrial PoE+ Unmanaged Ethernet Switch, 6*10/100Tx (30W/Port) + 2*100Fx MM (2KM)
SC, 12VDC-36VDC

\$525.00

Quantity:

ADD TO CART



LNP-0802-M-24-T

8Port Industrial PoE+ Unmanaged Ethernet Switch, 6*10/100Tx (30W/Port) + 2*100Fx MM (2KM)
SC, 12VDC-36VDC, EOT: -40~75C

\$559.00

Quantity:

ADD TO CART



LNP-2602GN

Industrial Managed Ethernet Switch with 24 10/100TX PoE. and 2 10/100/1000T or 1000T SFP
Combo Ports, -10°C ~ 60°C

\$1,799.00

Quantity:

ADD TO CART



LNP-2602GN-T

Industrial Managed Ethernet Switch with 24 10/100TX PoE. and 2 10/100/1000T or 1000T SFP
Combo Ports, EOT (-35°C ~ 70°C)

\$1,989.00

Quantity:

ADD TO CART

Thank you

Open Door Inc

www.opendeye.com